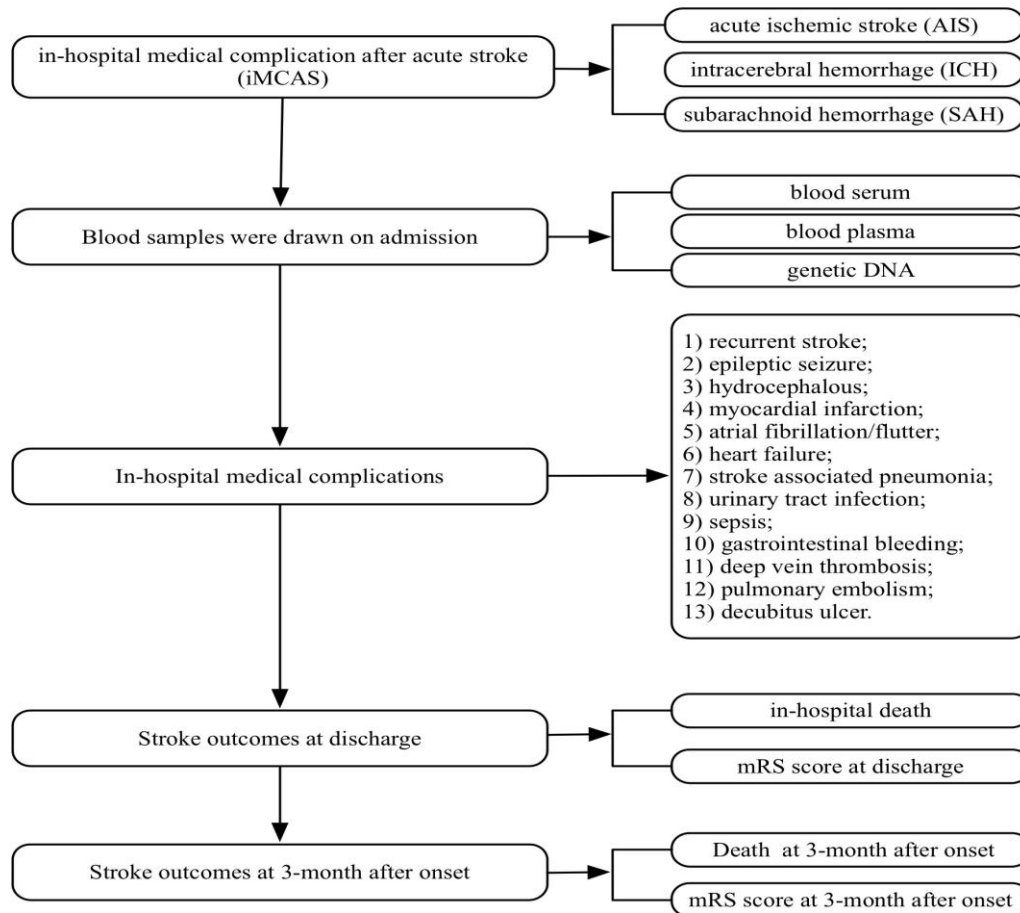


Supplementary Material

	AIS (N=1129)	ICH (N=314)	SAH (N=328)	P value
Demographics, n (%)				
Age, mean (SD)	58.7±12.5	54.7±14.2	54.2± 12.3	<0.001
Gender (male)	230 (20.4)	93 (29.6)	164 (50.0)	<0.001
Stroke risk factors, n (%)				
Hypertension	755 (66.9)	208 (66.2)	184 (56.1)	0.001
Diabetes mellitus	341 (30.2)	41 (13.1)	29 (8.8)	<0.001
Dyslipidemia	206 (18.2)	36 (11.5)	28 (8.5)	<0.001
Atrial fibrillation	69 (6.1)	10 (3.2)	3 (0.9)	<0.001
Coronary artery disease	151 (13.4)	26 (8.3)	20 (6.1)	<0.001
History of stroke/TIA	266 (23.5)	48 (15.3)	30 (9.1)	<0.001
Current smoking	628 (55.6)	120 (38.2)	118 (35.9)	<0.001
Comorbidities, n (%)				
Congestive heart failure	6 (0.5)	3 (1.0)	0 (0.0)	0.23
Valvular heart disease	10 (0.9)	2 (0.6)	1 (0.3)	0.54
Chronic obstructive pulmonary disease	26 (2.3)	9 (2.9)	6 (1.8)	0.68
Peripheral artery disease	8 (0.7)	0 (0.0)	0 (0.0)	0.1
Hepatic cirrhosis	17 (1.5)	3 (1.0)	4 (1.2)	0.73
Peptic ulcer	21 (1.9)	3 (1.0)	6 (1.8)	0.53
Renal failure	7 (0.6)	2 (0.6)	1 (0.3)	0.78
Arthritis	16 (1.4)	5 (1.6)	0 (0.0)	0.09
Cancer	14 (1.2)	3 (1.0)	4 (1.2)	0.92
Pre-stroke dependence (mRS _{≤2}), n (%)	1110 (98.4)	309 (98.4)	324 (99.1)	0.66
Admission NIHSS score, median (IQR)	4 (2-8)	4 (1-10)	0 (0-0)	<0.001
Dysphagia at admission, n (%)	124 (11.0)	24 (7.6)	2 (0.6)	<0.001
Admission Hunt-Hess score	2 (1-2)	...
Admission WFNS score	1 (1-1)	...
Etiology, n (%)				
Large artery atherosclerosis	936 (82.9)	
Small vessel disease	13 (1.2)	
Cardioembolism	109 (10.0)	
Other determined etiology	19 (1.7)	
Undetermined etiology	52 (4.6)	
Primary intracerebral hemorrhage	...	277 (88.2)	...	
Secondary intracerebral hemorrhage	...	34 (10.8)	...	
Aneurysm subarachnoid hemorrhage	241 (73.3)	
Non-aneurysm subarachnoid hemorrhage	88 (26.7)	
Admission SBP (mm Hg), median (IQR)	151 (136-167)	158 (140-171)	148 (135-162)	<0.001
Admission DBP (mm Hg), median (IQR)	87 (79-98)	93 (83-104)	89 (80-97)	<0.001
BMI (Kg/m ²), median (IQR)	25.2 (25.2-29.4)	25.2 (21.0-29.4)	25.2 (21.0-25.2)	<0.001
Blood test				
WBC, (10 ⁹ /L), median (IQR)	7.38 (6.11-9.01)	8.83 (7.34-11.0)	10.0 (8.07-11.8)	<0.001
TG, (mmol/L), median (IQR)	1.30 (0.96-1.76)	1.34 (1.01-1.85)	1.32 (1.02-1.75)	0.32
TC, (mmol/L), median (IQR)	3.97 (3.38-4.68)	4.75 (4.11-5.46)	4.82 (4.30-5.58)	<0.001
LDL, (mmol/L), median (IQR)	2.48 (1.88-3.06)	3.09 (2.46-3.70)	3.07 (2.47-3.68)	<0.001
HDL, (mmol/L), median (IQR)	0.98 (0.85-1.16)	1.14 (1.00-1.36)	1.32 (1.10-1.50)	<0.001
Glucose, (mmol/L), median (IQR)	5.07 (4.41-6.89)	5.04 (4.37-6.07)	5.15 (4.49-6.18)	0.25
Creatine, (mmol/L), median (IQR)	64.9 (55.5-74.6)	61.7 (52.1-72.1)	51.0 (42.0-61.6)	<0.001

Time from onset to admission (days), median (IQR)	3 (1-5)	3 (1-4)	2 (1-3)	<0.001
Length of hospital stay (days), median (IQR)	14 (11-16)	14 (12-18)	14 (11-18)	<0.001
In-hospital SAP, n (%)	86 (7.6)	59 (18.8)	55 (16.8)	<0.001
SD: Standard Deviation; IQR: Interquartile Range; TIA: Transient Ischemic Attack; mRS: modified Rankin Scale; NIHSS: National Institutes of Health Stroke Scale; WFNS: World Federation of Neurologic Surgeons; SBP: Systolic Blood Pressure; DBP: Diastolic Blood Pressure; BMI: Body Mass Index; WBC: White Blood Cell; RBC: Red Blood Cell; HGB: Hemoglobin; TG: Triglyceride; TC: Total Cholesterol; LDL: Low Density Lipoprotein; HDL: High Density Lipoprotein; SAP: Stroke Associated Pneumonia				

Supplementary Table 1: Patient characteristics stratified by stroke subtypes.



Supplementary Figure 1: The schematic diagram of the iMCAS.